

Оркестровые трудности

Corno IV

Beethoven — Symphony No. 9

8

Corno IV

65 *Andante moderato* 14 *Clar. I* *Adagio*
Fag. I *pp dolce*

85

93 *Solo* *cresc.*

99 *Lo stesso tempo* *p*

103 *cresc.* *p*

110 *cresc.* *cresc.* *p*

115 *cresc.* *p*

119 *piu p* *pp* *cresc.* *f*

122 **A** *f* *dolce*

127 *f* *f* *f*

133 **B** *pp cresc. p* *cresc.*

139 *p* *cresc.* *7*

150 **C** *f* *p* *f* *pp* *f* *pp* *3*

Horn IV in F.

Тиль Уленшпигель

37 *ausgelassener und lebhafter*

ff

38 *drohend*

ff

Gleichgültig. drohend

ff

39 *etwas breiter klüglich*

ff

40 *mit Dämpfer.*

pp

Epilog. doppelt so langsam. (im Zeitmass des Anfangs $\frac{4}{8}$)

Dämpfer weg.

pp 13 *p* 2

Sehr lebhaft.

f cresc. *ff* *fff*



Спящая красавица

№ 14 Сцена

29

Allegro con spirito

1

f

4

8

2

10 Solo

mf

12

16

3

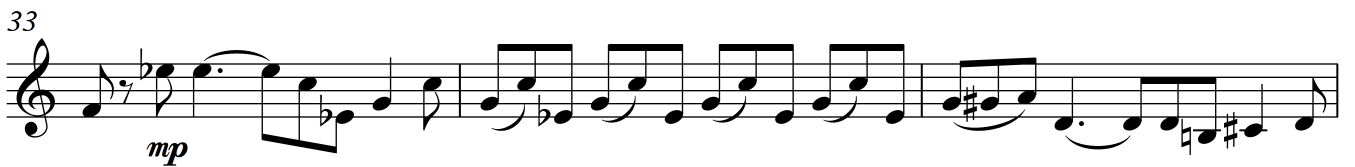
20

9

2 8 10

Антракт и сцена

Allegro con spirito



Спартак

№ 1 Картина VII Пир у Красса

1 Allegro ma non troppo

2

f *mf* *cresc.*

7 233

f *mf* *cresc.* *f*

14 234 8 235

mp

48 237 2 1 Solo 1 1

mf *cresc.* *ff* *f*

57 238

mf

Тоска

29

АКТ III

K&M STANDS for music
Made in Germany

Andante sostenuto

in G

The image shows a handwritten musical score on five staves. The music is written in treble clef with a key signature of one sharp (F#) and a time signature of 3/4. The tempo is marked 'Andante sostenuto'. The score includes various musical notations such as notes, rests, slurs, and dynamic markings. A red circle highlights the tempo and key signature 'in G'. A red 'Dim.' marking is present on the fifth staff. A boxed number '1' is written above the fifth staff. A black sticker with the text 'K&M STANDS for music Made in Germany' is placed over the second staff. The page number '29' is in the top right corner, and 'АКТ III' is written at the top of the first staff.

Фантастическая симфония

Adagio ♩ = 84

Musical notation for the first piece, Adagio. The score is written on a single staff in treble clef with a 6/8 time signature. It begins with a piano (*p*) and dolce marking. The melody consists of eighth and sixteenth notes, some beamed together. There are two double bar lines with a fermata above the second one. A second ending bracket labeled '2' spans the final two measures, which end with a double bar line.

Римский карнавал

13 Allegro vivace

Musical notation for the second piece, Allegro vivace. The score is written on a single staff in treble clef with a 6/8 time signature. It begins with a piano (*p*) marking. The melody is characterized by a rhythmic pattern of eighth and sixteenth notes, with some notes beamed together. The key signature has one sharp (F#).

A small musical notation fragment consisting of a single staff in treble clef with a few notes.

A small musical notation fragment consisting of a single staff in treble clef with a few notes.

